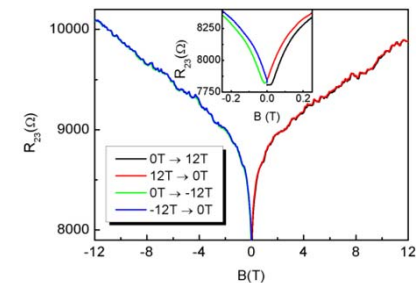
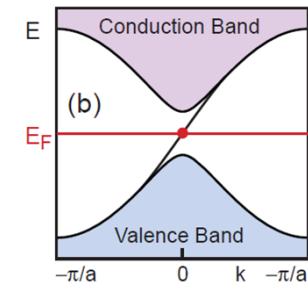
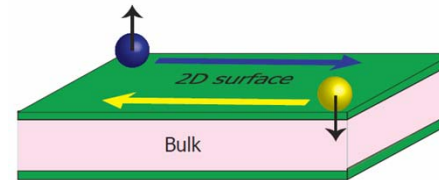
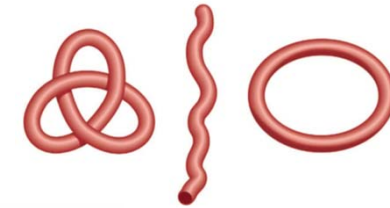


Transport of surface states of topological insulators

- Research into a new class of materials “topological insulators” (TI’s)
- Insulating in the bulk but conducting on the surface
- Surface states are protected by topology
- Project: to investigate surface states of TI’s by magnetotransport
 - resistance and Hall effect
 - weak antilocalization
 - universal conduction fluctuations
 - Shubnikov-de Haas effect
 - topological Berry phase



For a popular introduction on TI’s read: J.E. Moore, Nature 464 (2010) 8916